

MAY 1919
SAN ANSELMO
CAL.

15

16

191
(39)

192
(38)

7

13

13

14

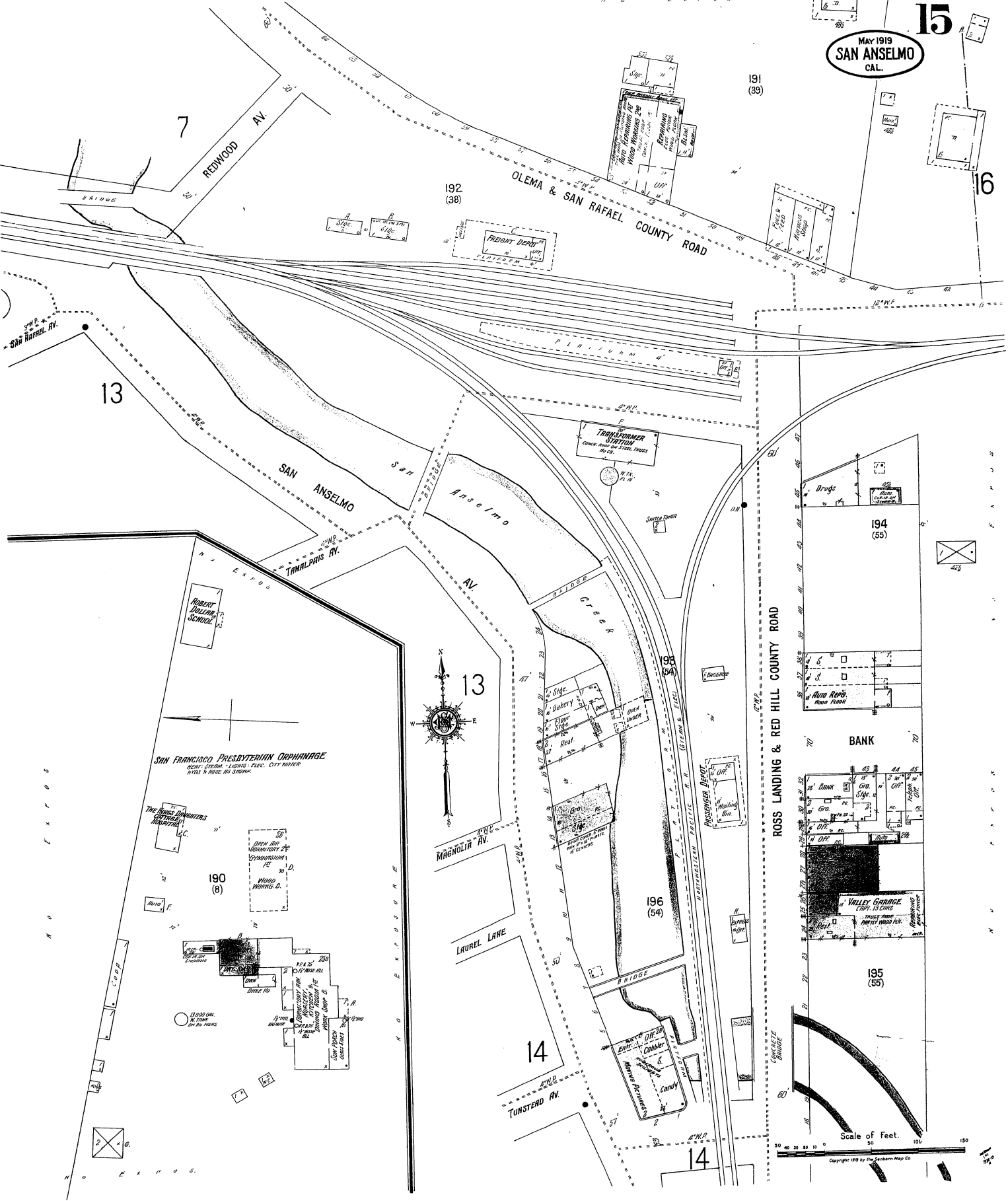
14

194
(55)

BANK

195
(55)

VALLEY GARAGE
CITY OF SAN ANSELMO



SAN FRANCISCO PRESBYTERIAN ORPHANAGE
HOT STEAM LIGHTS, ELEC. CITY WATER
WATER & POWER CO. OWNERS

THE AMES BROTHERS
CITY OF SAN ANSELMO

DRUG STORE
CITY OF SAN ANSELMO

190
(8)

TRANSFORMER STATION
CITY OF SAN ANSELMO

Bakery
CITY OF SAN ANSELMO

196
(54)

Candy
CITY OF SAN ANSELMO

DRUGS
CITY OF SAN ANSELMO

VALLEY GARAGE
CITY OF SAN ANSELMO

VALLEY GARAGE
CITY OF SAN ANSELMO

Scale of Feet.

Copyright 1919 by the Sanborn Map Co.